

CERTIFICATE OF LOCATION OF GOVERNMENT CORNER

EAST QUARTER Corner of Section 26, Township 105, Range 42, 5TH P.M.

STATE OF MINNESOTA, County of MURRAY

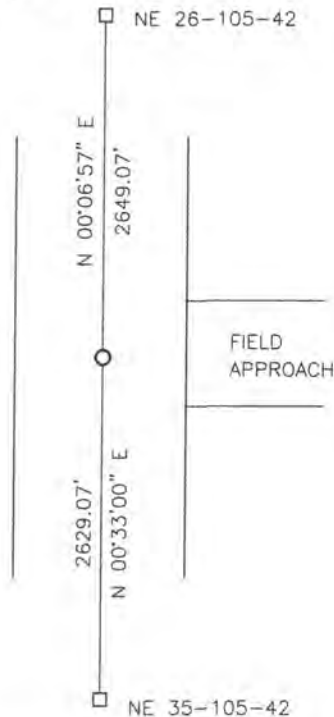
At the corner location shown on the sketch:

- On _____ found a _____
- left monument as found, lowered monument, removed monument (explain)
- On 08/06/2018 placed a 5/8" IRON WITH SEAL #43844.

SKETCH OF REFERENCE TIES



X X X X X



Minnesota State Plane Coordinate
 System Murray County Datum
 NAD83 (1996)
 N: 108029.809
 E: 479694.938

Statement of evidence relative to this corner location is on back of page.

I hereby certify that this document and the data contained herein was prepared by me or under my direct supervision

8/28/18
DATE

Daniel L. Bueltel
License No. 43844

Statement of Evidence

In 1861, Wellman and Smoot did the original subdivision of the township.

On August 6, 2018, Bueltel-Moseng Land Surveying dug with a backhoe and found nothing. We set a $\frac{5}{8}$ " iron with seal #43844 in the center of the road and in line with the fence to the west.